



Using Touch Unpack

To use Touch Unpack it needs to be installed on the computer to be used. The latest version will be on any supplied CD and is also available from the downloads page at www.ikonavs.com

Installation

Double click on **TouchUnPack.msi** and follow the instructions. When finished Touch Unpack will be installed and ready for use.

Connect to the Touch Podule

Connection is via a Local Area Network (Ethernet) connection, using TCP/IP protocol. **Touch Unpack's** transfer routine makes the process as simple as possible.

The PC must first be connected to the Touch Podule's programming port (under the front bezel) with a CAT5 crossover cable. The other end must be connected to a LAN (Ethernet) port on the PC. Never connect a PodNet cable to the Touch Podule's programming port.

Programming

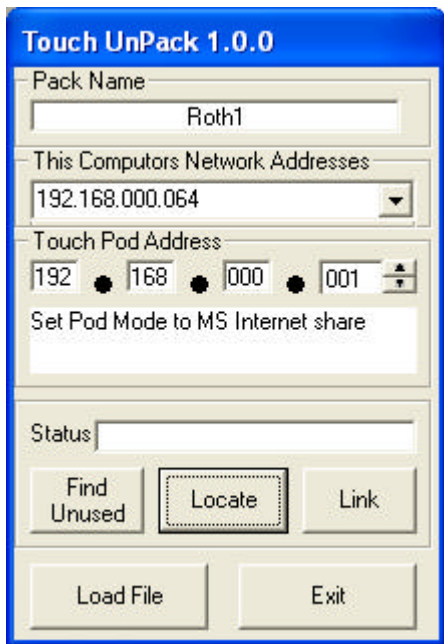
The Touch Podule needs placing into the programming mode. With the Touch Podule powered, touch the lower-right-hand corner of the touch panel screen for approximately 5 seconds, and the Touch Panel will enter **Setup Mode**, and the Setup page will be displayed.

The options offered on the Setup page are

- **Touch Here To Calibrate Touch** – touch in this area to enter Screen Calibration Mode
- **Touch Here To Reconfigure Screen** – touch in this area to enter the Program Transfer routine.
- **Touch Here To Return To Normal**– touch here to exit Setup and return to normal screen operation.

Select **Touch Here To Reconfigure Screen** to launch the Touch Podule's Download Tool. The screen displayed allows the setting of an IP address for the Touch Screen.

Locate the *.IKX file to be uploaded and double click on it. This will open Touch Unpack and display the following screen.



← File Name

← Address to set the Touch Podule to.

← Logging on controls

← Download controls

Alternatively you can open Touch Unpack from START \ All Programs \ Ikon AVS \ Touch Unpack. Once running click on LOAD FILE and browse for the .PEX file then continue.

Setting the Touch Screens IP Address

In the **Touch Unpack Screen** dialogue box (above), the **Touch Pod Address** boxes will display the address that the Touch Podule needs to be set to.

If it is necessary to alter the Touch Pod's address, this can be done with the **Up** and **Down** buttons under each of the four bytes. Note there are three IP Addressing modes which can also be set to assist in this:

- **MS Windows 'Auto'** is for use with MS 'auto-addressing' mode, if this is set on the PC. In accordance with Microsoft practice, this sets the first three bytes of the address to 169.254.229.
- **MS Internet Share** This is a alternative Microsoft mode, and sets the first three bytes to 192.168.000
- **Other** This mode allows all four bytes to be at will.

When the address is correct, touch **OK**. The Download Tool screen clears and a message "**Touch here to abort download**" is displayed. The Touch Podule is now ready to receive data from the PC.

If **Exit** is touched at this point, the Configure routine is aborted completely, and the Touch Podule will revert to its normal display state without any data having been transferred. The screen display will be that of the previous program version.

Transferring the Program

To transfer the program, the Touch Podule IP address must have first been set correctly on the Download Tool page, and **OK** clicked. If this is not done, the PC will not be able to communicate with the Pod.

On the PC, click the **Locate** button. The Status field immediately above should confirm that the Podule has been identified over the network connection and that transfer of the program can now take place. Click the **Program** button (which now replaces **Locate**) to initiate the transfer.

Once the transfer is complete, the touch panel display clears and resets, then will display the new layout just sent. On the PC Exit the upload utility.

IKON AVS LTD

Unit 238 IKON Estate, Droitwich Road, Hartlebury, Worcestershire. DY10 4EU
Tel:- 01299-250991 Fax:- 01299-250983 email:- sales@ikonavs.com