

SCREEN PODULE

'THE PODULES'

A range of innovative control interfaces available in numerous formats providing easily programmed control for dedicated applications. The R series PODULES are designed for free standing, wall or rack mounting and provide a simple distributed remote control system interconnection by Cat 5 cables.



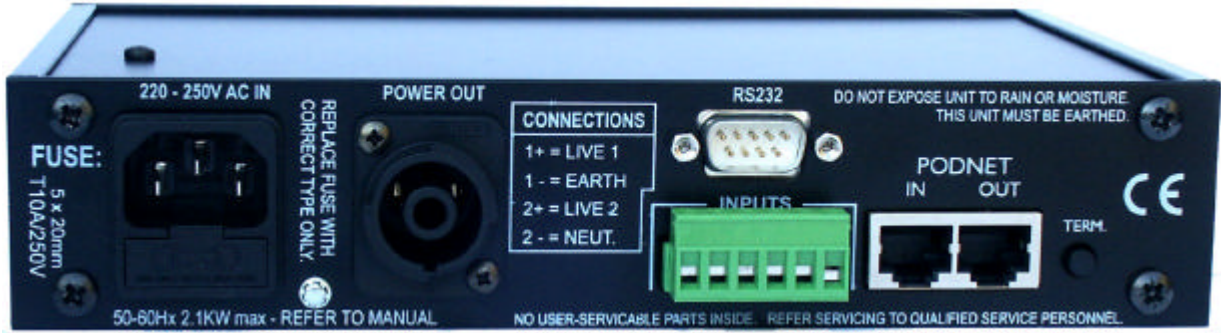
Screen PODULE is designed to provide mains power switching for electric projection screens, motorised curtains and blinds or other twin channel power switching requirements. Fitted with two 4 amp relays as well as four local inputs and RS232 control, Screen PODULE also incorporates a system power supply and ideally suited for:-

- Dual interlocked 'Raise' and 'Lower' for screens and blinds.
- Remote rack and system power On/Off.
- Two independent RS232 controlled power On/Off circuits.
- Simultaneous control over projectors (RS232) and Screens.
- Interface between RS232 and relays
- Interlinking of multiple screens using PodNet BUSS
- Interlinking of multiple projectors using PodNet BUSS.

Whilst mainly used for Screen, Curtain and Blind control via PodNet, the four configurable local inputs can be used with local switches, PIR sensors, and time clocks etc.. The RS232 output is ideal for linking to a local projector or plasma screen and by using the Podules ultra flexible system architecture the local, RS232 and PodNet inputs can be configured with internal software controlled logic processing and routing to any combination of outputs both within the PODULE and external via the PodNet BUSS.

The internal 15w power supply provides all the power necessary to run a small home cinema or lecture theatre PODULE installation consisting typically of a WALL, CIR and SCREEN PODULE up to a maximum of four units.

Simple to configure software allows for a multitude of simple or complex tasks with many applications available as library functions. For convenience the unit is shipped pre-configured for use as a Screen or Curtain controller from assigned PodNet addresses.



4 x Contact / Switch Inputs:

4 x Digital, Software controlled Active Hi / Active Lo.

1 x Configurable RS232 Input:

Supporting eight control strings of up to eight bytes.

1 x Mains Input:

Via fused IEC socket.

1 x PodNet BUSS:

Thirty-two message Tx & Rx.

2 x Switched Mains Outputs:

240V 4A AC rated, (1KVA)
via locking 4 pole connector.
(Supplied).



1 x Configurable RS232 Output:

Supporting eight control strings of up to eight bytes.

Wall mounting brackets as well as a rack mounting kit for up to 2 type R Podules are available.

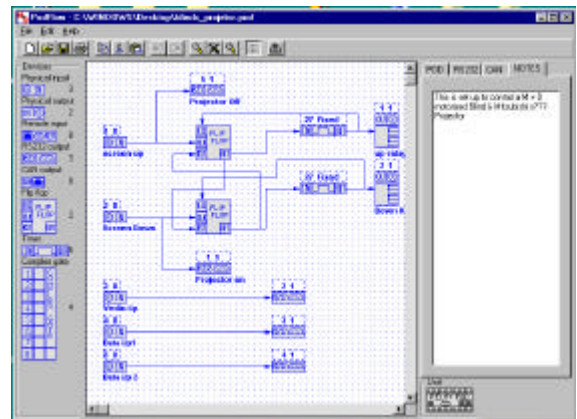


PodFlow Software

System configuration is as easy as dragging and dropping. Using PodFlow you can easily configure the system with one of the pre-defined applications or simply create your own. Selecting from the menu of available inputs, outputs and logic devices, a schematic of the desired controller is created. Inputs and Outputs can be labelled as to function and have variable parameters configured. When complete PodFlow will allow you to emulate the final result before saving to both file and PODULE.

SCREEN PODULE supports the following logical devices:-

- 8 x Flip-Flops with multiple inputs for Clock, Reset and Enable.
- 4 x Configurable timers, adjustable between 1 second and 18 Hrs.
- 4 x Four input logic gates configurable as a combination of &, OR and Invert.



Download from:- www.ikonavs.com