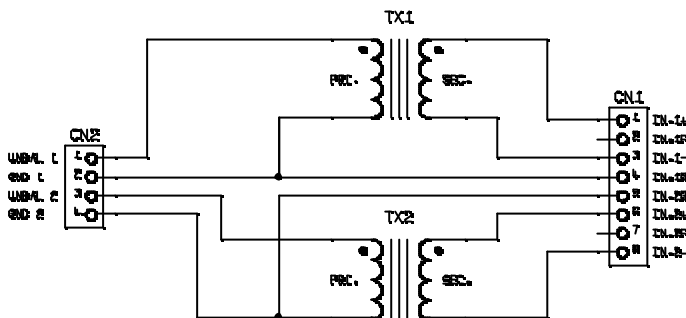


Connecting & Using the Balance PEA

Use

The Balance Pea is intended for line level operation nominally at 0dB. The maximum input level is +10dB. It can be used to convert between balance and unbalanced audio signals or just provide ground isolation.

Schematic

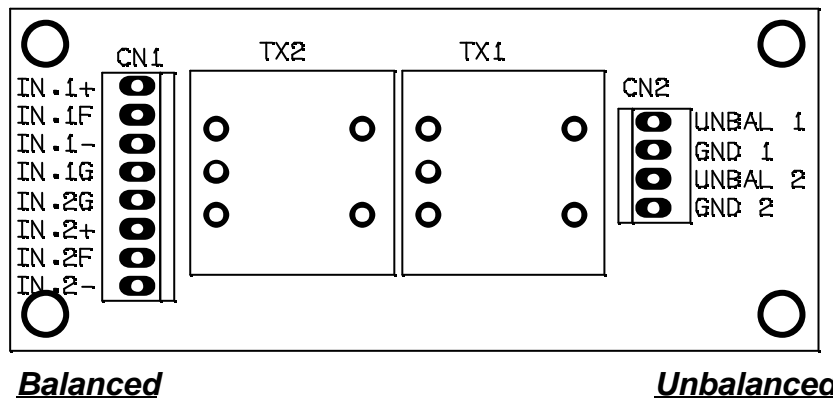


The unit consist of two audio transformers terminated into screw terminals

Installation

The Balance Peas is intended for mounting onto a 35mm DIN rail. It is also fitted with four mounting holes allowing the PCB to be removed from the housing and mounted via M3 pillars (not supplied).

Connections



Balanced

Unbalanced

For connection of the balanced equipment:-

IN.#+ is the Phase (Hot) connection,
IN.#- is the antiphase (Cold) connection.

For the screen of the balanced cable use:-
IN.#F to keep the balanced and unbalanced screens isolated.

IN.#G to connect the balanced screen to the unbalanced Ground.

For connection of the unbalanced equipment.

The 'UNBAL' connection is signal and the respective GND is for the screen / common.

The two GND connections ARE NOT connected together.

Typical Uses

Balanced to Unbalanced adapter with ground isolation.

Unbalanced		Balanced
Signal to UNBAL 1		Phase (Hot) to IN.1+
Ground to GND 1		Anti-Phase (Cold) to IN.1-
		Screen to IN.1F

Balanced to Unbalanced adapter without ground isolation.

Unbalanced		Balanced
Signal to UNBAL 1		Phase (Hot) to IN.1+
Ground to GND 1		Anti-Phase (Cold) to IN.1-
		Screen to IN.1G

Balanced to balanced adapter with ground isolation.

Unbalanced		Balanced
Phase (Hot) to UNBAL 1		Phase (Hot) to IN.1+
Anti-Phase (Cold) to GND 1		Anti-Phase (Cold) to IN.1-
Screen is not connected		Screen to IN.1F

Unbalanced to unbalanced adapter with ground isolation.

Unbalanced		Balanced
Signal to UNBAL 1		Signal to IN.1+
Ground to GND 1		Ground to IN.1-

Electromagnetic Compatibility

This equipment has been designed, manufactured and tested to conform to the European EMC directives EN55103-1 & EN55103-2 for classifications E2 and E4.

Manufacturers Information

For service or warranty advice please initially contact your supplier. Alternatively contact the manufacturers direct.

Website www.ikonavs.com

Technical support e-mail support@ikonavs.com

