



# ICS-10 QUICK START GUIDE

Congratulations on purchasing the Ikon iCS-10 system switcher and controller.

We do appreciate how much people hate plodding through manuals and just want to get on with using their new purchase, so this quick start guide is for you. Not to say that you shouldn't read the complete manual, give it a try some afternoon rather than depressing yourself reading the latest match results. If you don't have a printed copy download it from [www.ikonavs.com](http://www.ikonavs.com).

## ***Getting Started.***

It's very possible that you have ordered the iCS-10 ready configured either from your dealer or direct from the factory – in that case just go straight to the section on connecting below. If not:-

How easy this is depends on what you are using the iCS-10 for. The simplest application is as a simple VGA, Video and Audio switcher – if that the case you are in luck, no configuration needed, go straight to connecting.

## ***Configuration***

The iCS-10 is intended to be configured to not only be an input switcher but also control the display. In this quick start guide we will cover setting it up for controlling a projector.

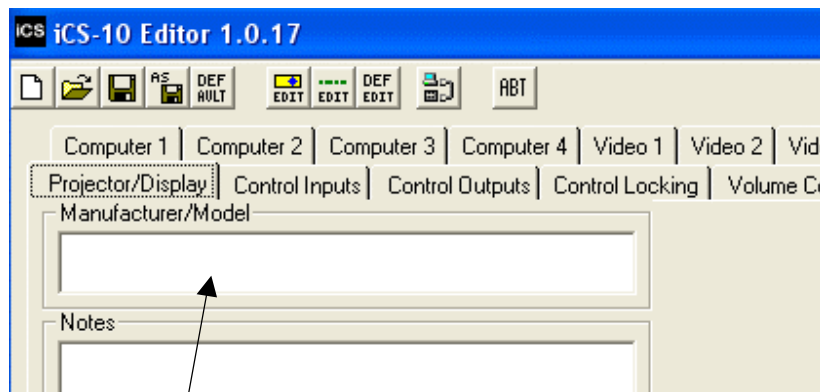
Before you start you need:-

- A laptop or other PC with a serial port (or USB to serial converter)
- A 9 pin to 9pin serial lead (straight connection socket to socket)
- A copy of iCS-10 Editor from our website. Install this and verify that, if you are using a USB to Serial converter, it's on Com 1, 2, 3 or 4. See the full manual on how to verify and change this if in doubt.

Connect and power the iCS-10 and connect the serial lead between the Units RS232/1 port and the computers Com port.

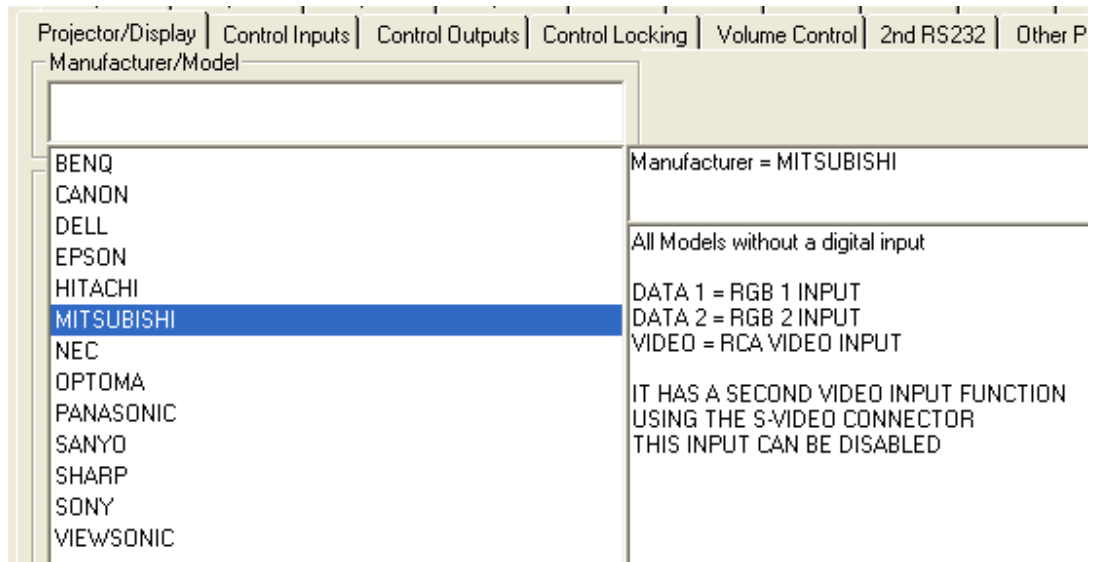
Start the iCS-10 Editor

The opening screen defaults to Projector / Display selection



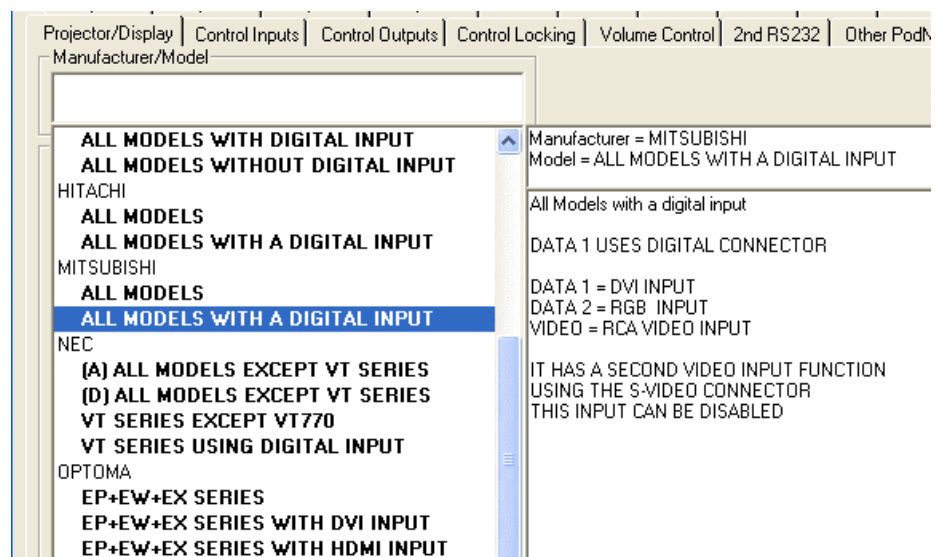
Click you mouse in The Manufacture / Model window to open a list of available displays.

Then move the mouse to the right to display the available models.




Just click on the model required.

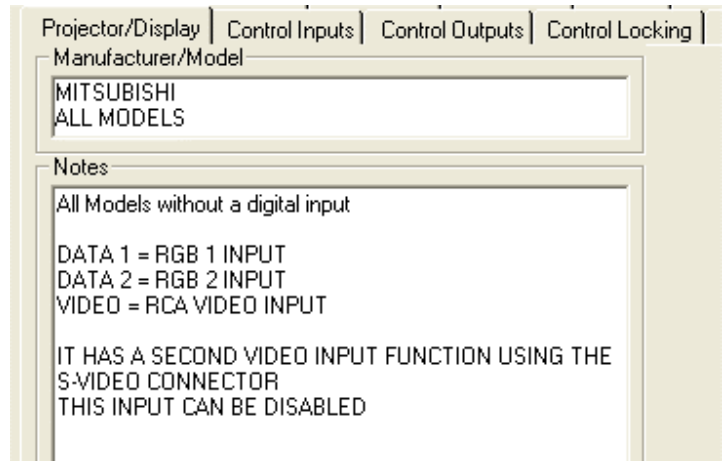
Your display not on the list? Check online for the latest library, if its not there let us know and we will add it or you can add it yourself – refer to the main manual for how.



That's it, unit configured.  
You just need to load it into the system.

Click on the  button and it will search for the iCS-10 on the available serial ports. When it finds it click on the round 'radio' button to the left of the name and click Program.  
It's that easy.

Note that if it fails to find the iCS-10 then either you are not connect to it, its not powered, or the USB adapter has been assigned a serial port number above 4. Refer to the full iCS-10 manual for how to correct this.



## Connecting

All connections are clearly labelled.



Connect PC video (VGA-WXVGA) to the HD15 sockets IN1 to IN4 and the associated audio to the Phono (RCA) sockets 1 to 4 respectively.

Connect Video sources to the BNC's IN5 to IN8 and the associated audio to the Phono (RCA) sockets 5 to 8 respectively.

Connect XVGA OUT A to the displays PC/ XVGA input

Connect VIDEO OUT A to the displays video input.

Connect AUDIO OUT to the amplifiers input. Connect fully balanced if possible or use + and Ground if unbalanced.

Connect any audio only sources (CD player, DAB Tuner etc) to IN9 and/or IN10.

Connect the microphone (if used ) to the MIC IN socket

Connect RS232/1 to the displays serial port (you may need a cross over or straight cable – check with the displays information).

Connect the mains to the iCS-10 and Display.

For basic operation – job done.

## Operating / Control

In this quick start guide we only cover basic operation from the front panel as well as controlling the input selection from an external RS232 device.



- ON/OFF** Press to turn the display ON. It flashes as the display 'warms up' when steady select your input.  
Press & Hold to turn off. Flashes fast whist 'cooling down'.
- COMPUTER** Select input 1,2,3 or 4 to router the pc's video to the display, turn the display to the correct input and route the sound to the audio out of the iSC-10.
- VIDEO** Select input 1,2,3 or 4 to router the video input to the display, turn the display to the correct input and route the sound to the audio out of the iSC-10
- AUDIO** Allows routing of one of the two audio only inputs. These also operate if the display is off.
- Volume** Adjust the level of the selected input, the input buttons act as a level meter.
- MICROPHONE** Adjust the level of the microphone (if connected). The microphone is not adjusted by the above volume push buttons.
- MIC ON** Turn on and off the microphone.

**Use with external RS232 controller.**

Here you need to set the controller to send the following as ASCII commands:-

<b>ON</b>	<b>OFF</b>	<b>PC1</b>	<b>PC2</b>	<b>PC3</b>	<b>PC4</b>	<b>Vid1</b>	<b>Vid2</b>
PN	PF	C1	C2	C3	C4	V1	V2
<b>Vid 3</b>	<b>Vid 4</b>	<b>Aud 1</b>	<b>Aud 2</b>	<b>Vol+</b>	<b>Vol-</b>	<b>Mic On</b>	<b>Mic Off</b>
V3	V4	A1	A2	VU	VD	MN	MF

The Baud rate is 19200, 8 bits, 1 stop bit and no parity.

Of course, if you use an Ikon AVS control panel, it connects via the PodNet port and has an equally simple set-up procedure.

**IKON AVS Ltd**

Unit 238 Ikon Trading Estate  
Droitwich Road  
Hartlebury  
Worcestershire  
DY10 4EU

Telephone: +44 (0) 1299 250991  
Fax: +44 (0) 1299 250983

Website:- [www.ikonavs.com](http://www.ikonavs.com)  
Technical support e-mail:- [support@ikonavs.com](mailto:support@ikonavs.com)