




Using IR Codes with the CIR Podule

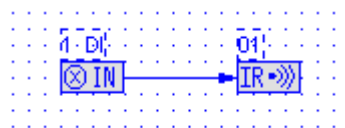
To program a CIR Podule you need PodFlow 3.1 installed on the computer to be used. The latest version is available from the downloads page at www.ikonavs.com.

Before you begin.

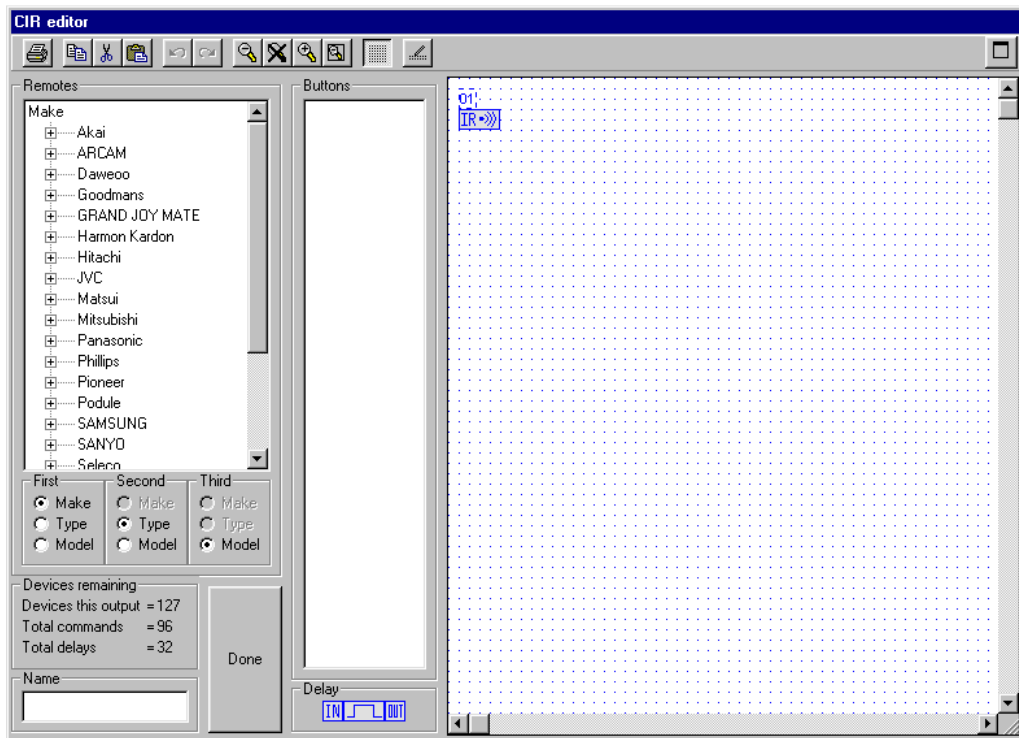
Connect. Using a fully populated Female to Female straight cable to connect the PC to the Podule. The CIR Podule will operate via a serial to USB converter if no serial port is available.

Inserting IR Codes.

Start PodFlow and from the left hand Pods list select CIR Podule. Create your diagram and to add IR control, in the 'Devices' menu click on a 'CIR Output'  and drag it onto the main working area. Wire the controlling device to the 'CIR Output'. The example below shows Input 1 wired to the CIR Output.

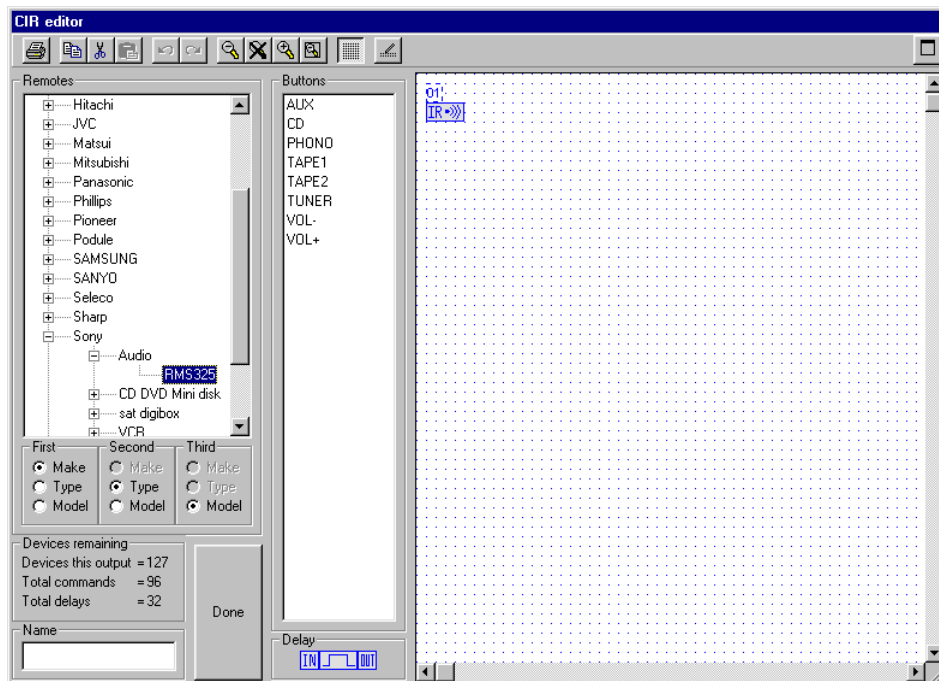


To configure the CIR Output double click on the symbol to open the configuration tool:-

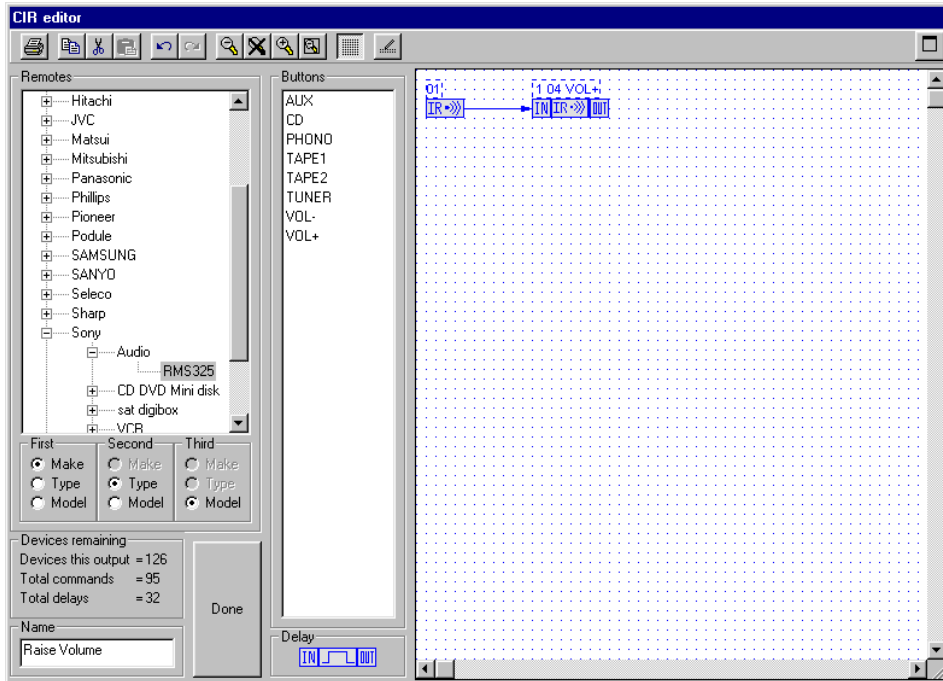


← Click here to expand to full screen.

From the 'Remotes' window select the Manufacturer of the device to be controlled, then select the Device Type and finally the Model. This will display a list of the available buttons.



Select the required button and drag it onto the working area. Wire from the IR tab to the button. You can also enter a name for the CIR Output sequence in the lower left hand box, that will be displayed in the main diagram.



You now need to configure the port to use this command. Double click on the added button.

- ← Displays the button name.
- ← Manufacturer
- ← Type of unit
- ← Model No.
- ← Enter preferred button name.
- ← Select the IR port to be used.
- ← See notes below on 'Repeats'.
- ← Click 'Done' when finished.

You have a choice of which IR port to use. IR1, 2, 3 & 4 are for stick on emitters' whist Port 5 is for use with a high power blaster, part no. IRB-1.

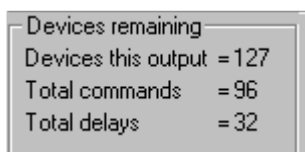
The number of 'Repeats' required depends upon the device to be controlled. The default value of 4 is normally suitable; however on say a tuner when entering a number sequence you may experience dual digits if the 'repeats' is set to high. Typically a Sky Satellite receiver requires 2 repeats. In the above example for a volume control you can adjust the number of repeats to vary the change in volume per button push.

Once you have assigned the button to a port click on DONE to return to the main CIR Editor screen.

At this point you can either exit by clicking on DONE or you can add additional buttons to create a sequence of IR events.

IR Sequences

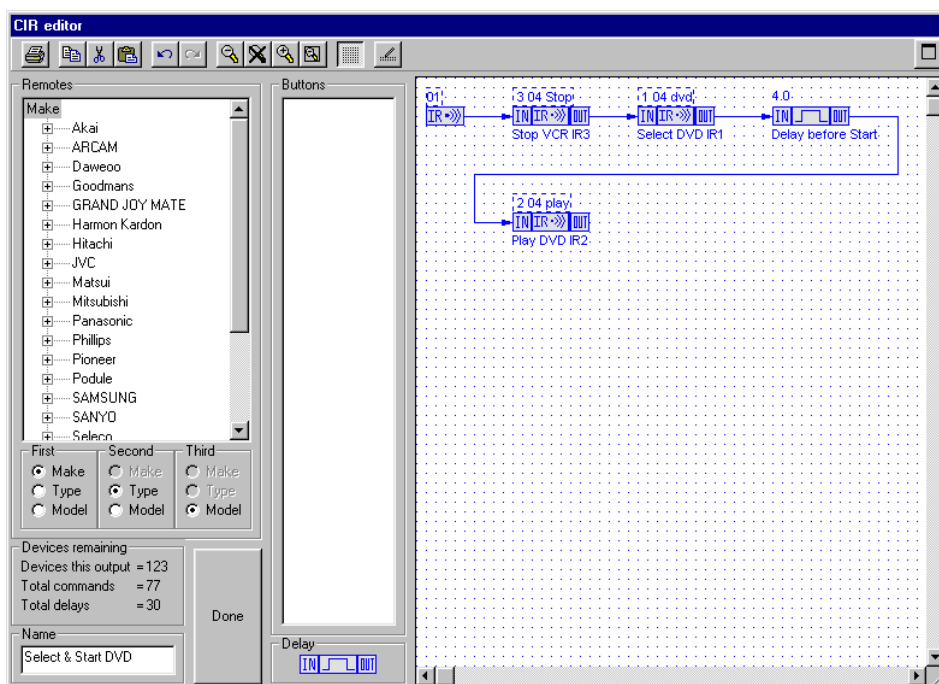
A single CIR output can contain up to 96 buttons. It can also support configurable delays with a maximum of 32 delays shared between all CIR Outputs. When in the CIR Editor, the area just above the Name box shows the number of buttons and delays available for the current CIR Output.



- ← Buttons available for this output.
- ← Total number of available delays.

These delays are in addition to the eight configurable timers within the main program and are normally used to start a machine playing after a routing sequence is completed. They are adjustable in 0.1 second intervals between 0.0 seconds to 12.7 seconds.

In the example below a DVD is selected and started. The first command Stops the VCR via IR output 3. The second controls the amplifier via IR output 1 to select the DVD input. A 4 second delay is now introduced to allow the associated Video Projector (controlled via RS232) to settle before a START command is issued to the DVD via IR output 2.



In a similar method to the above it is permissible to control more than one device via a single IR port provided and external dual emitter or IR splitter is used. The only criteria with this are that any devices controlled this way must ignore IR commands not intended for them. For example, if you needed to control two identical VCR's you must use separate IR ports whereas if you are controlling say a DVD and VCR they can share the same port if more convenient.

Modifying IR Codes

Changing IR codes within an existing CIR Podule program is as easy as adding new codes. Follow the procedure to add new codes but when in the CIR Editor click on the redundant code and drag to an unused part of the working area. Now click on the incoming connection and use the Delete button to delete it, repeat with any outgoing connection.

Select the new button from the appropriate menu and drop in the position previously occupied by the old button and connect the In and Out. Double click the new button and configure the IR port etc.

You can now, if you wish, click on the old button and delete it, note however that IR commands are embedded into the program and unless you created the original program you may not have this button in your library so it is prudent to retain it until you have tested the revised program and know that you do not wish to reinstate the original button. There is no problem leaving unused button within the CIR Editor.

Manufacturers Information

Manufactured in England by Nebula Audio Ltd.

For service or warranty advice please initially contact your supplier.
Alternatively contact the manufactures at:-

Nebula Audio Ltd
40 Saint Dunstans Close
Worcester
WR5 2AJ

Telephone: +44 (0) 1299 250991

Fax: +44 (0) 1299 250983

Website www.ikonavs.com

Technical support e-mail

support@ikonavs.com