

How to import the Synergy IR Devices Database into the Synergy software.

Go to the “Synergy” page or the “Software Configuration page” on the iKON AVS web site

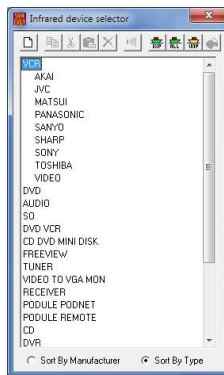
On the Synergy page select the “Downloads” tab

Click on the “Synergy IR Devices Database.IXL” link and save this file onto your computer.

Open the Synergy Editor Software.

Click on the “Edit IR Devices” button 

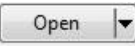
A window will open called “Infrared device selector”



Within this window click on the Import button 

A window will open where you can search your computer for the saved “Synergy IR Devices Database.IXL”



Navigate to the saved “Synergy IR Devices Database.IXL” and click on the open button 

The IR Devices Database will now be imported for use into the Synergy software